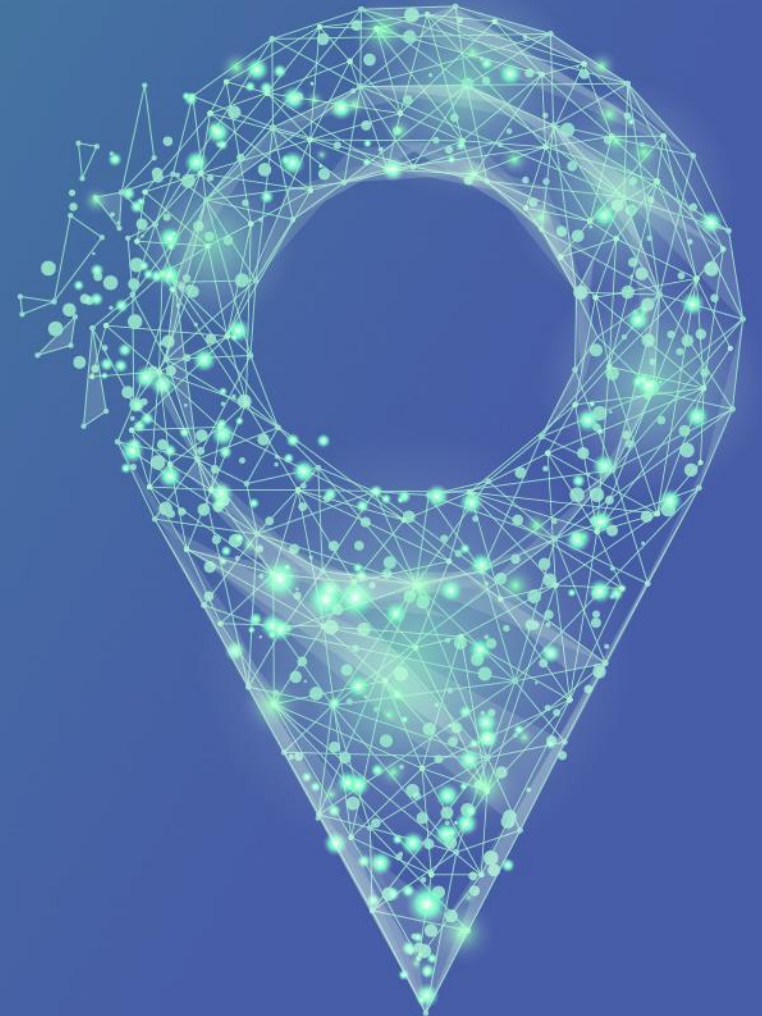


An introduction to... HDR UK

Caroline Cake, CEO



We are the national institute for health data science

Our mission is to unite the UK's health data to enable discoveries that improve people's lives.



UK Research
and Innovation



CHIEF
SCIENTIST
OFFICE



Ymchwil Iechyd
a Gofal **Cymru**
Health and Care
Research **Wales**



Public Health
Agency
Research and Development

BILL & MELINDA
GATES *foundation*

NIHR | National Institute
for Health Research



Engineering and
Physical Sciences
Research Council



Medical
Research
Council



Economic
and Social
Research Council

Enabling greater public benefit from data



Over the last three years we have created a four-nation UK institute to unite health data - 86 organisations across 32 locations



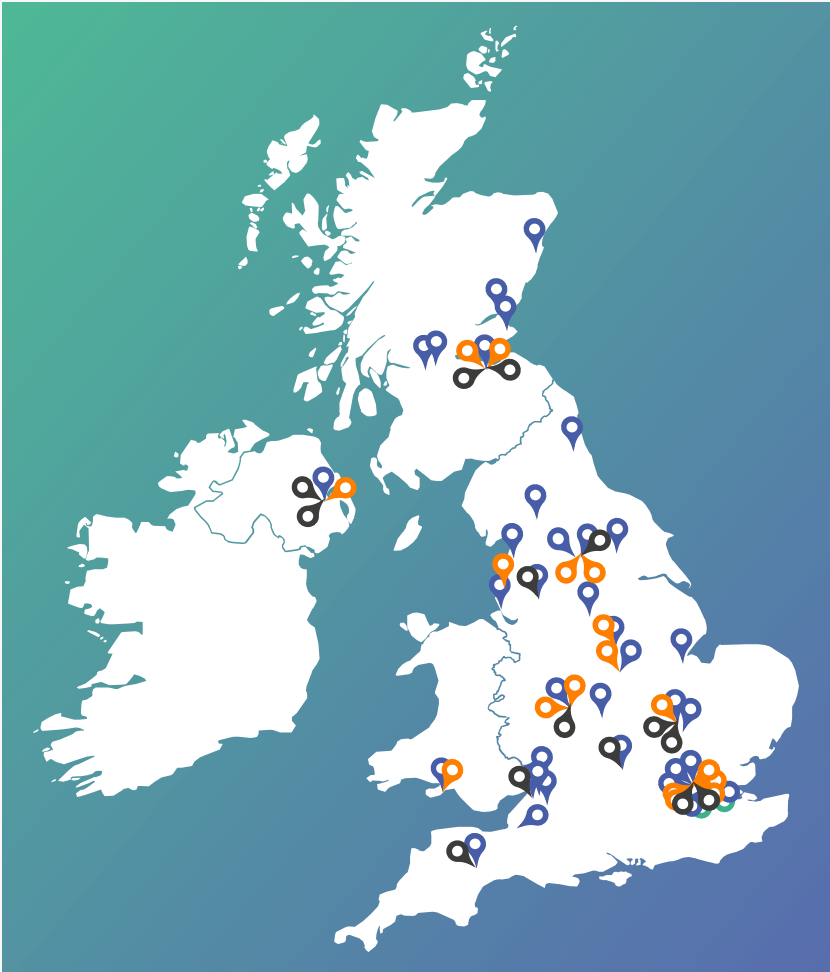
**Wellcome Trust
Great Ormond Street DRIVE
Unit**

CENTRAL TEAM OFFICES



**HDR UK Cambridge
HDR UK London
HDR UK Midlands
HDR UK North
HDR UK Oxford
HDR UK Scotland
HDR UK South-West
HDR UK Wales and Northern
Ireland**

RESEARCH LOCATIONS



**BREATHE
DATA-CAN
Discover-NOW
Gut Reaction
INSIGHT
PIONEER
NHS DigiTrials
BHF Data Science Centre
DATAMIND
Alleviate**

**HEALTH DATA
RESEARCH HUBS**



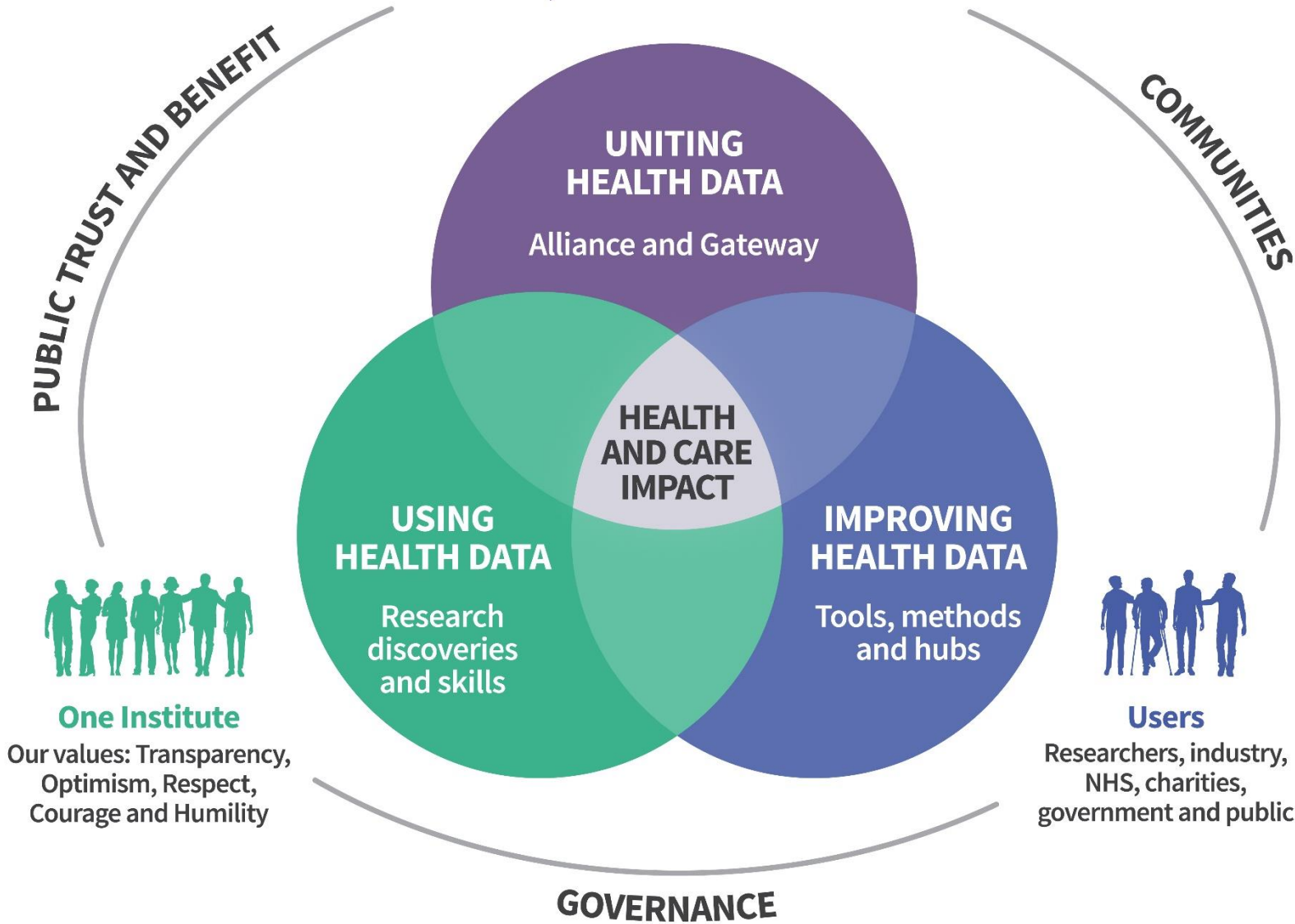
**Belfast Oxford
Birmingham
Bristol
Cambridge
Edinburgh
Exeter
Leeds
London
Manchester**

**TRAINING LOCATIONS
(Masters and PhD)**

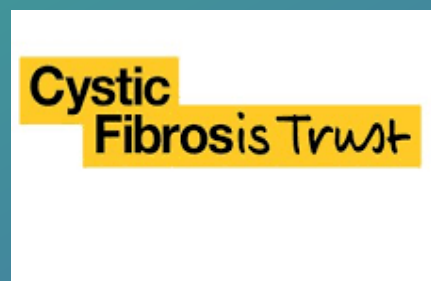




Public, Patients & Practitioners



With a growing community of researchers, innovators, technologists, clinicians, patients, & public across industry, NHS, academia and charities working together...





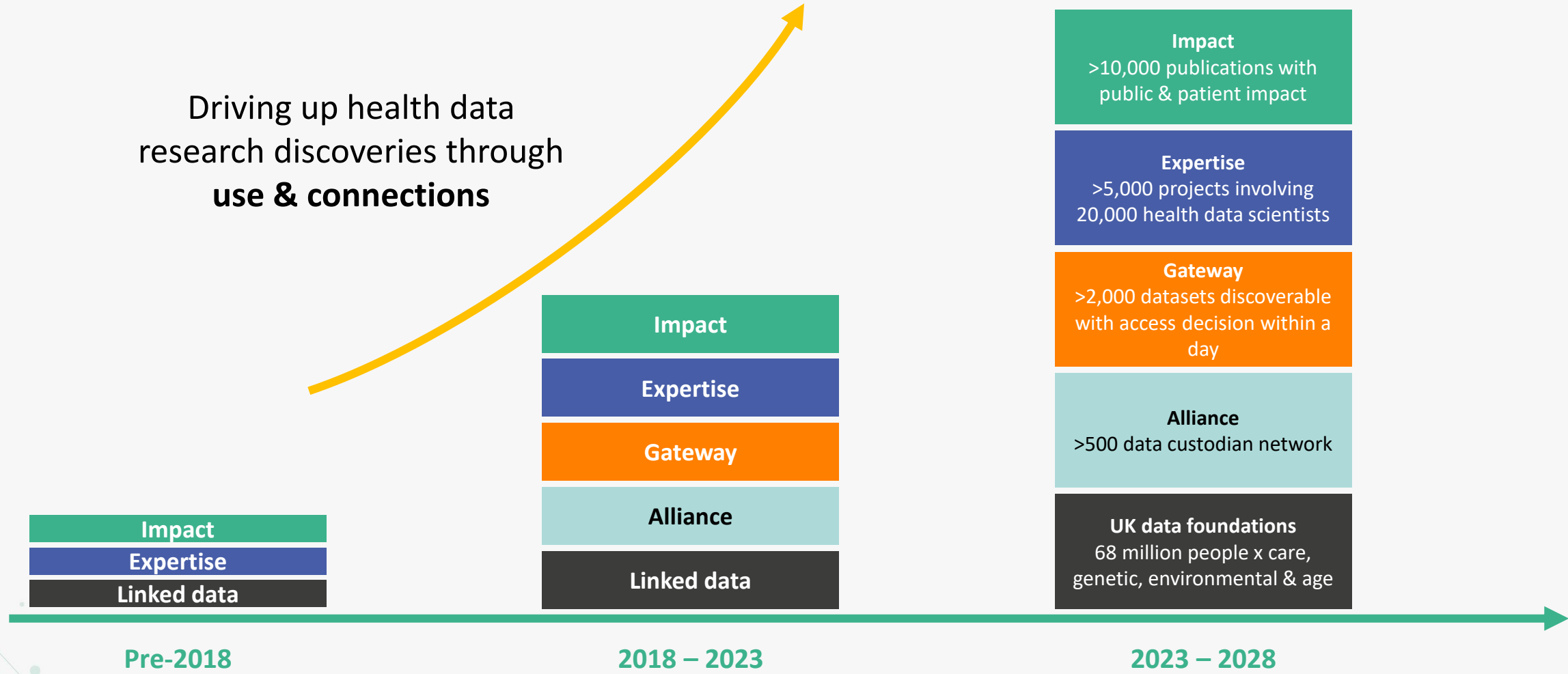
Where are we going

HDR UK over the next 5 years



What's next?

Driving up health data
research discoveries through
use & connections



Unite a complex environment, which is broader than just health data...



requires interoperability and federation....
to work across systems with no additional effort.

DARE UK

Quinquennial review – 2023 to 2028

- An opportunity to collaborate and build joint strategy
- Information and events all listed at <https://www.hdruk.ac.uk/quinquennial-review/>
- Please get in touch to discuss more



Join us at our upcoming 'Quinquennial Review: the THIRD "Frontiers" Meeting' – happening 14:00 Monday, 15 November!

[Register now](#)

Join us at our upcoming workshop "Pandemics and Outbreaks"
18th November, 9:30 – 11:00

[Register now](#)

Join us at our upcoming meeting, "Big Data for Common Complex Disease"
19 November, 11:00 – 13:00

[Register now](#)

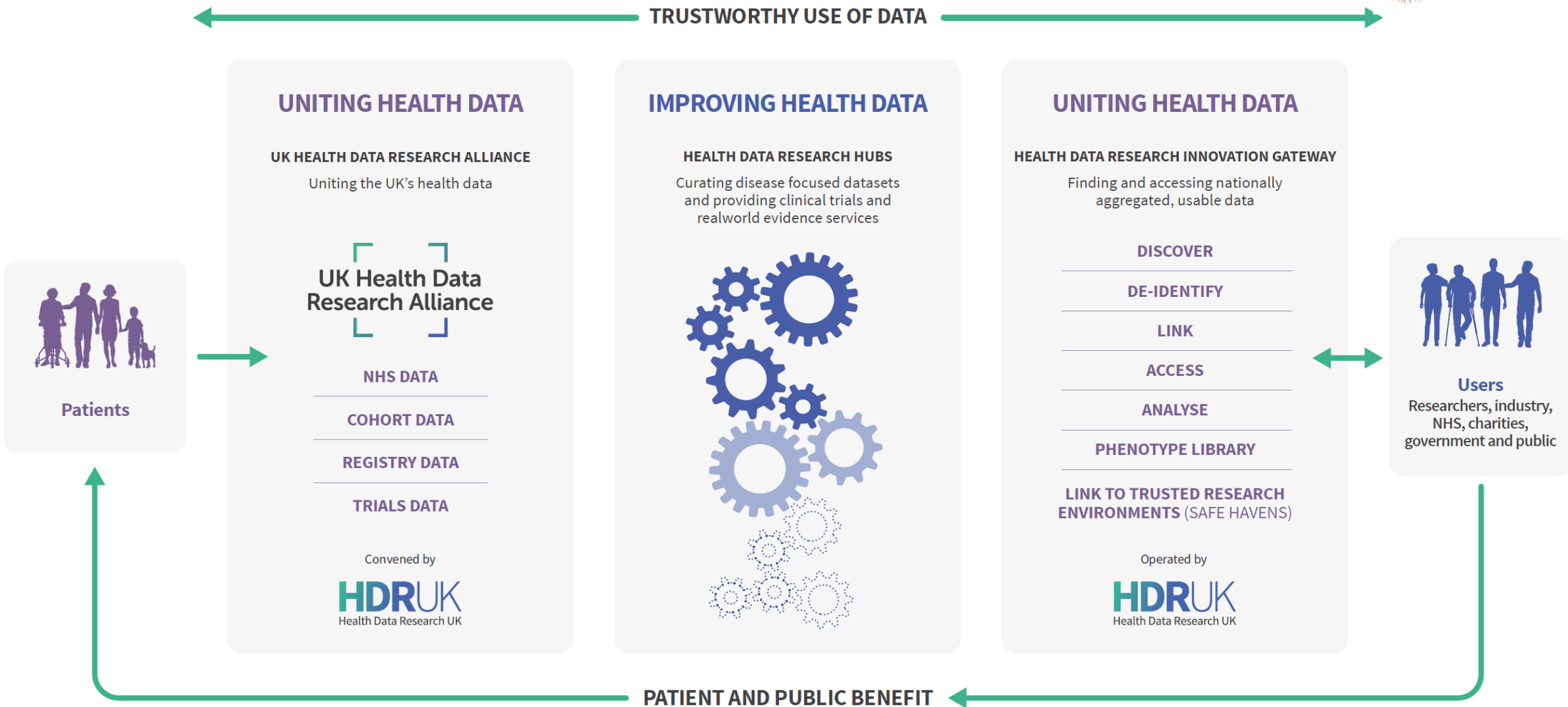
Developing an open data ecosystem

David Seymour, Alliance Executive Director

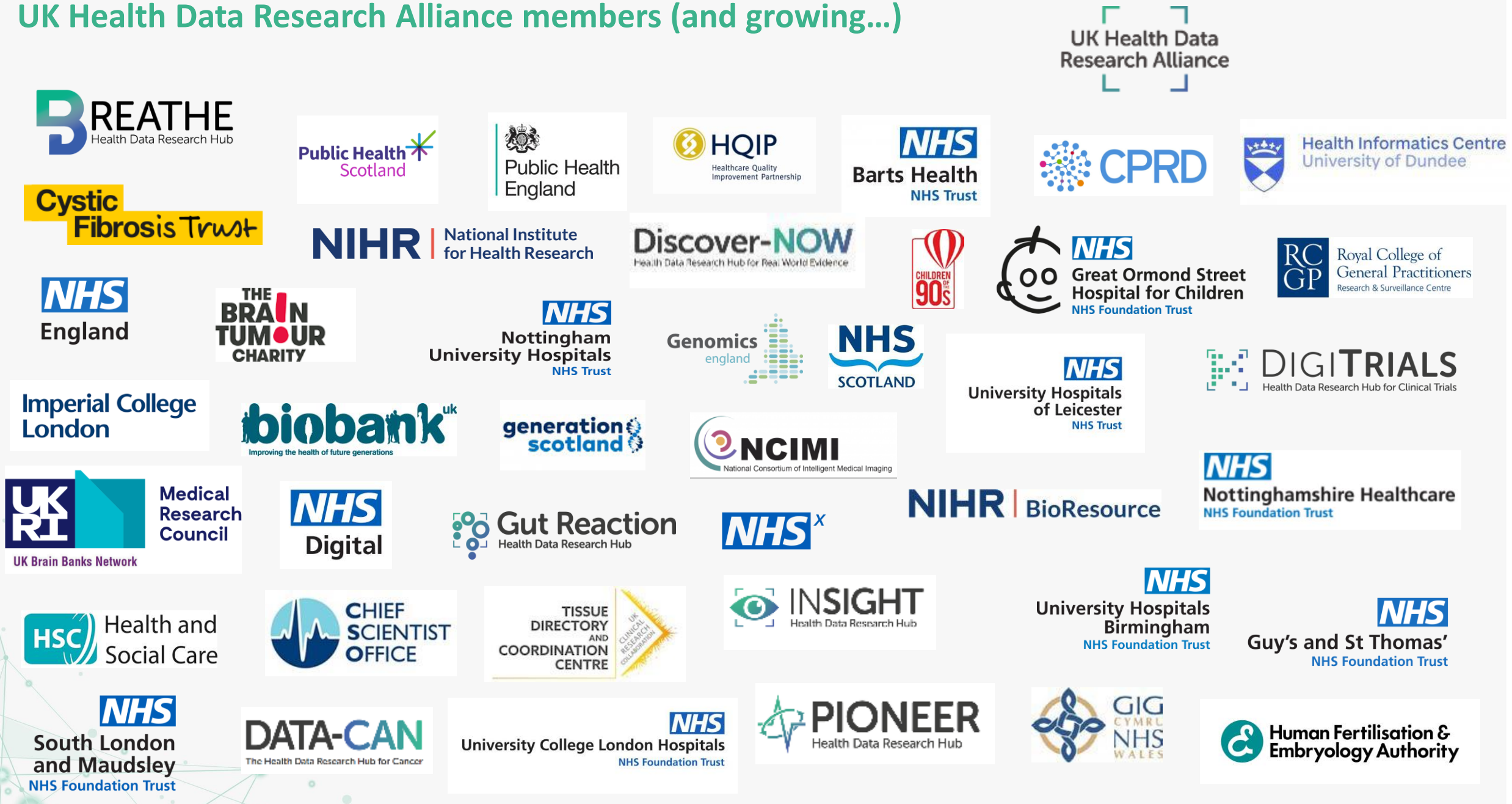
10/11/2021



The key components of the infrastructure funded initially through Digital Innovation Hub workstream of the Industrial Strategy Challenge Fund (ISCF) Data to Early Diagnosis and Precision Medicine programme



UK Health Data Research Alliance members (and growing...)



The Alliance delivery sub-groups

Improving Data Utility

Oversee, coordinate, and produce guidance and policy regarding data quality, standards, dataset publishing, data provenance, ontology / terminology services and use.

Engaging and involving practitioners, patients and the public

Understand the interests and values of practitioners, patients and the public in health data.

Aligning approaches to trusted research environments

Agree on requirements for secure analytic environments where researchers can bring analyses and algorithms to the data.

Enhanced discovery & access via the gateway

A one-stop-shop destination to discover, access, manage and drive the ethical and safe use of data through rich metadata and cohort discovery and collections.

Promoting participation and improving access

Ensure consistency and harmonise principles, definitions, process steps to develop a best practice for assessing requests to access UK health data.

Building *the* Gateway for researchers and innovators to discover and access data

New Data Utility Wizard Tool

Try out our new tool which will help refine your search to only datasets that meet your data utility requirements- click the Advanced Search button below!

[Give Feedback on the tool](#)

Health Data Research
Innovation Gateway

Explore ▾ Help ▾ Usage Data ▾ About Us ▾ News Community

🔍

+ Add new

Sign in | Sign up

Gateway to health data and tools for research

Search, discover and request access to hundreds of datasets, tools and resources for your research. Join the thousands of researchers and scientists worldwide who are already using the Gateway for research and scientific discovery.

🔍 I'm looking for...

★ [Advanced Search](#)

Data Utility Wizard

Use this tool to find the datasets you require through 6 key data utility filters: allowable uses, time lag, length of follow up, data model, provenance and search terms.

Question 1 of 6

Allowable uses ● ○ ○ ○ ○ ○

Please select the identifier that is most relevant to you (optional)

☐ Academic research

☐ Student / educational project

☐ Charitable or non-profit project

☐ Commercial project

View 702 dataset matches

Next

datasets

701

tools

155

projects

262

courses

195

papers

1,358

dataset requests

356

registered users

1,656

searches last month

13,267

<https://www.healthdatagateway.org/>

| 15

A common, transparent approach to data access management based around the Five Safes framework

Health Data Research
Innovation Gateway

Data Access Request

ALLIANCE > SAIL

Save now

About this application

Safe people

Safe project

Safe data

Safe settings

Safe outputs

Files

About this application

Preparation is key to a successful data access request. You need to be able to demonstrate how you will ensure safe use of patient data and the potential for public benefit. The steps below are intended to help you get off to a good start.

1

Select the datasets you need

The datasets you select may impact the questions being asked in this application form. You cannot change this.

4/73 questions answered | 5FC0-31C3-D1E8-1B7C-1E02-BAF7

Contributors

Submit application

Next

Data access request applications

Manage forms and applications

days

average time from submission to decision

All (6)

Pre-submission (6)

Submitted (0)

In review (0)

Approved (0)

Rejected (0)

ALLIANCE > NHS DIGITAL - Pillar 2 - Covid-19 UK Non-hospital Antigen Testing Results

0 days since start

Pre-submission

Datasets

Pillar 2 - Covid-19 UK Non-hospital Antigen Testing Results

Custodian

ALLIANCE > NHS DIGITAL

Applicants

David Seymour

Submitted

-

Last activity

27 November 2020 19:10

Understanding the value of public donated data to managing a pandemic

0 days since start

Pre-submission

Datasets

COVID-19 Symptom Tracker Dataset

Custodian

ALLIANCE > SAIL



What did we recommend as the key principles for a standard?

	Recommendation
Recommendation 1: Transparency	All data custodians and controllers responsible for the collection, storage and sharing of data for the purpose of research, innovation and service evaluation should publish a public record (data use register) of approved research studies, projects and other data uses.
Recommendation 2: Frequency	Data use registers should, as far as possible, be populated in near real time directly from information provided through the Data Access Request process to improve timeliness and accuracy of entries.
Recommendation 3: Format	Data use registers should be made available in both human-readable and machine-readable formats.
Recommendation 4: Content	Data use registers should have a consistency of format and content based on the Five Safes framework and an agreed specification to enable ease of understanding and aggregation of registers.
Recommendation 5: Link to outputs	Researchers, data custodians and funders should use data use registers to close the loop on the impact of data use by including, where possible, links to research findings and other outputs as these become available.

Opportunities for your charity to get involved

- Join one of our Gateway Open door events to learn more (e.g., tomorrow, [11 Nov at 2:00pm](#))
- Work with HDR UK to make a disease thematic collection of the most relevant datasets in your subject.
- Promote the Gateway to your research community as a way to find relevant health data
- Use the Gateway to help fulfil commitments to make data generated through work you support more widely available. Request or require your funded researchers to use the Gateway to improve discovery and develop access mechanisms.
- Join the UK Health Data Research Alliance so your organisation can contribute to the development of practice and standards for data sharing at scale.



...uniting, improving and using data to enable discoveries
that improve people's lives

Health Data Research Hub programme

James Pickett, Hub Development manager

10/11/2021



Health Data Research Hubs

- Take a national role in curating data and improving its quality and access
- Supports users with tools and expertise to deliver research and innovation
- Embeds public and patients at the heart of what it does
- Works with HDR UK to reuse the infrastructure and contribute to a national Hub network.

Discover-NOW
Health Data Research Hub for Real World Evidence

 **DIGITRIALS**
Health Data Research Hub for Clinical Trials

 **Gut Reaction**
Health Data Research Hub

 **PIONEER**
Health Data Research Hub

 **BREATHE**
Health Data Research Hub

DATA-CAN
The Health Data Research Hub for Cancer

 **INSIGHT**
Health Data Research Hub

 **Alleviate**
The Advanced Pain Discovery Platform
(APDP) Data Hub

 **DATA MIND**
The Health Data Research Hub for Mental Health

Introducing the BHF Data Science Centre

Partnership

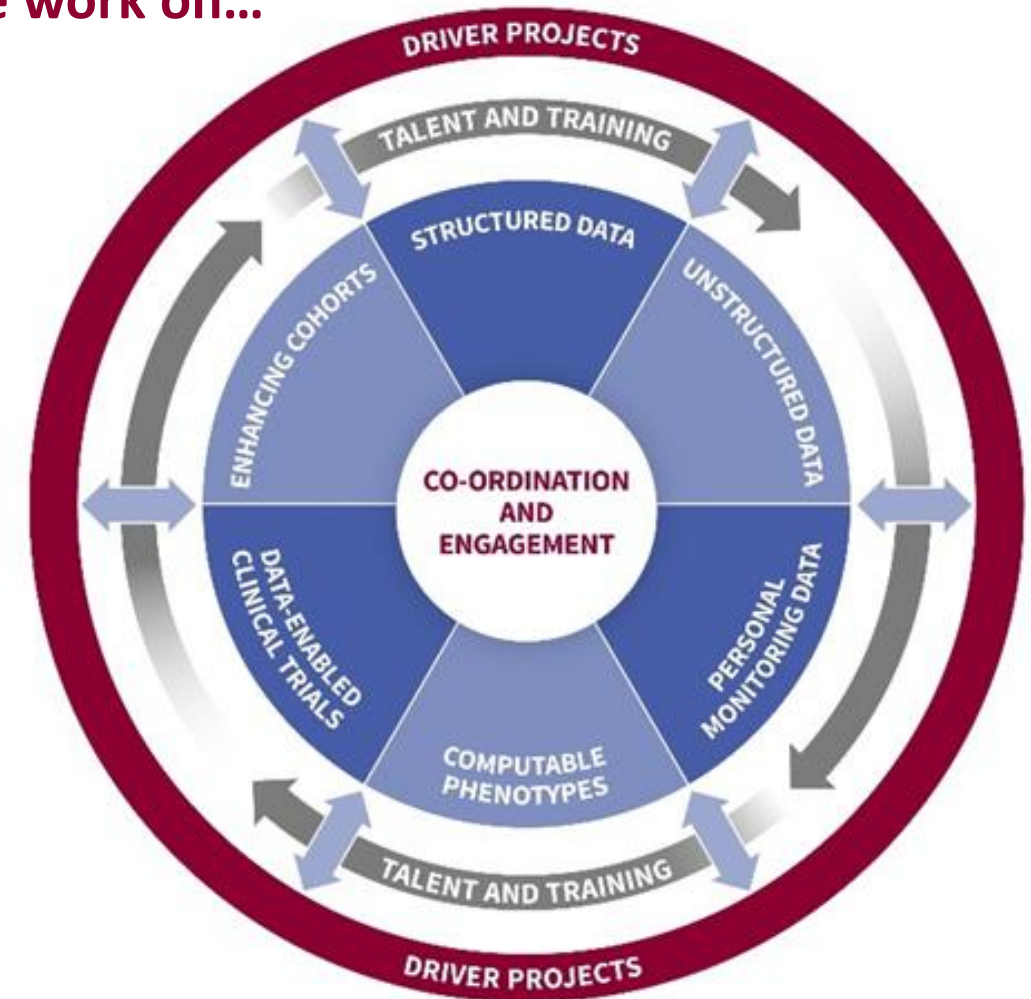


Our vision

To improve the cardiovascular health of the nation using the power of large-scale data and advanced analytics across the UK

The BHF Data Science Centre makes it easier for researchers across the UK to collaborate and securely access the latest and most relevant health data, speeding up research and helping to answer vital questions about heart and circulatory diseases to improve health in the UK and beyond.

We work on...



Health Data Research Hubs

Insights and Impacts on COVID-19

HDRUK
Health Data Research UK

What is our impact?

150

datasets available for research

400+

contracts providing data services to industry, academia and the NHS

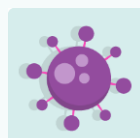
20000

contacts involving patients and the public in health data research

32

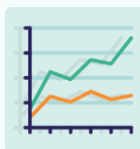
datasets at the top level of metadata quality

How our Research Hubs are shaping discovery



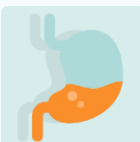
NHS DigiTrials

Provided access and linked data for the RECOVERY Trial, saving thousands of lives.



DATA-CAN

Estimated excess cancer patient deaths.



Gut Reaction

Enabled 34,000 people with inflammatory bowel disease to assess their risk.



BHF Data Science Centre

Enabled safe, secure access to health data for over 55 million people in the UK, to investigate the impact of COVID-19 on cardiovascular disease.



PIONEER

Analysis of real-time data discovered an increase in venous thromboembolic events (VTE); developed guidance which is now being used in over 60 hospitals



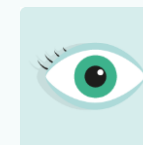
Discover-NOW

Supported a range of projects across London.



BREATHE

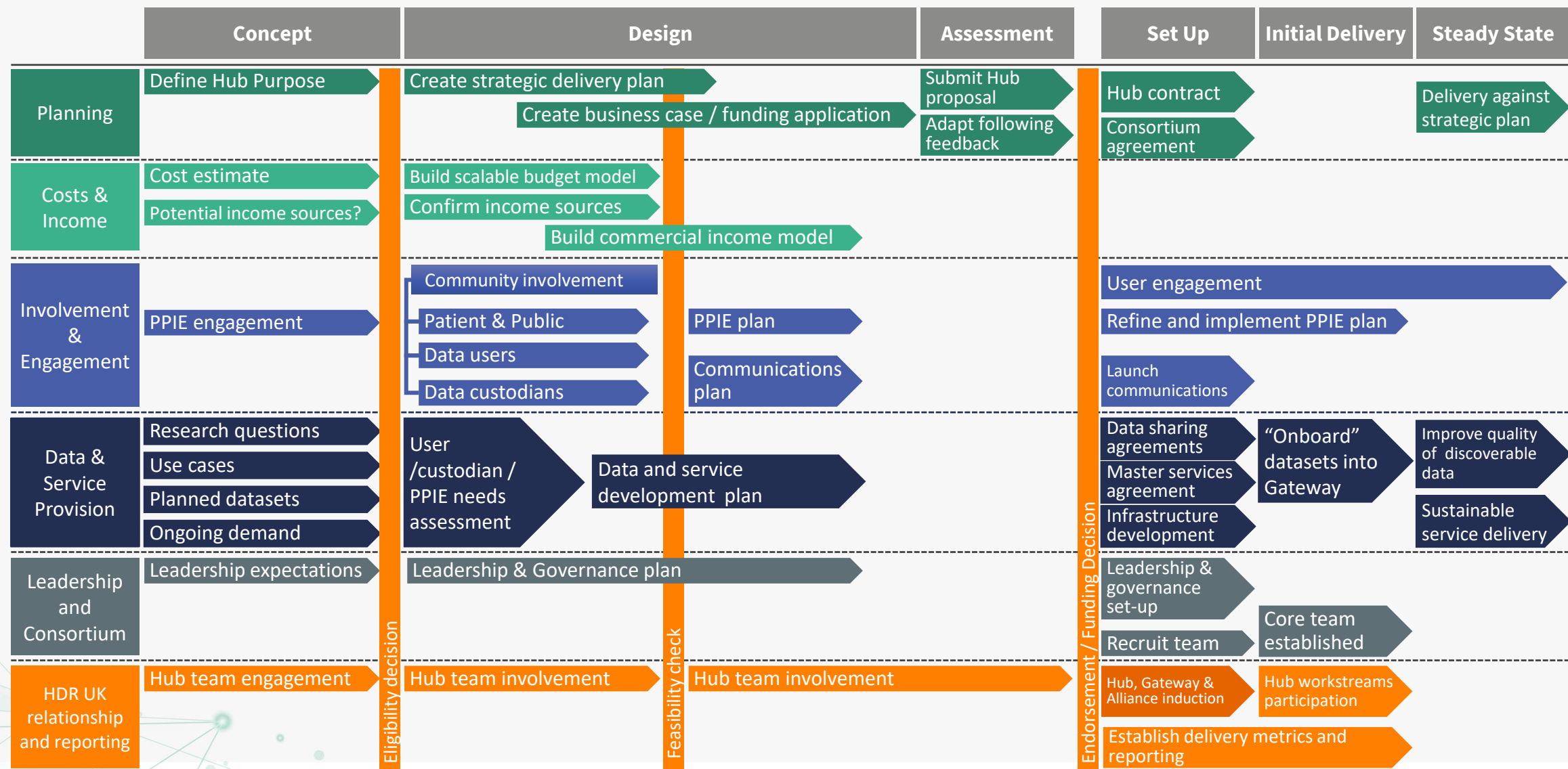
Provided policymakers maps and hotspot data from 4.4.m people using the ZOE/ Kings College London Symptom Study.



INSIGHT

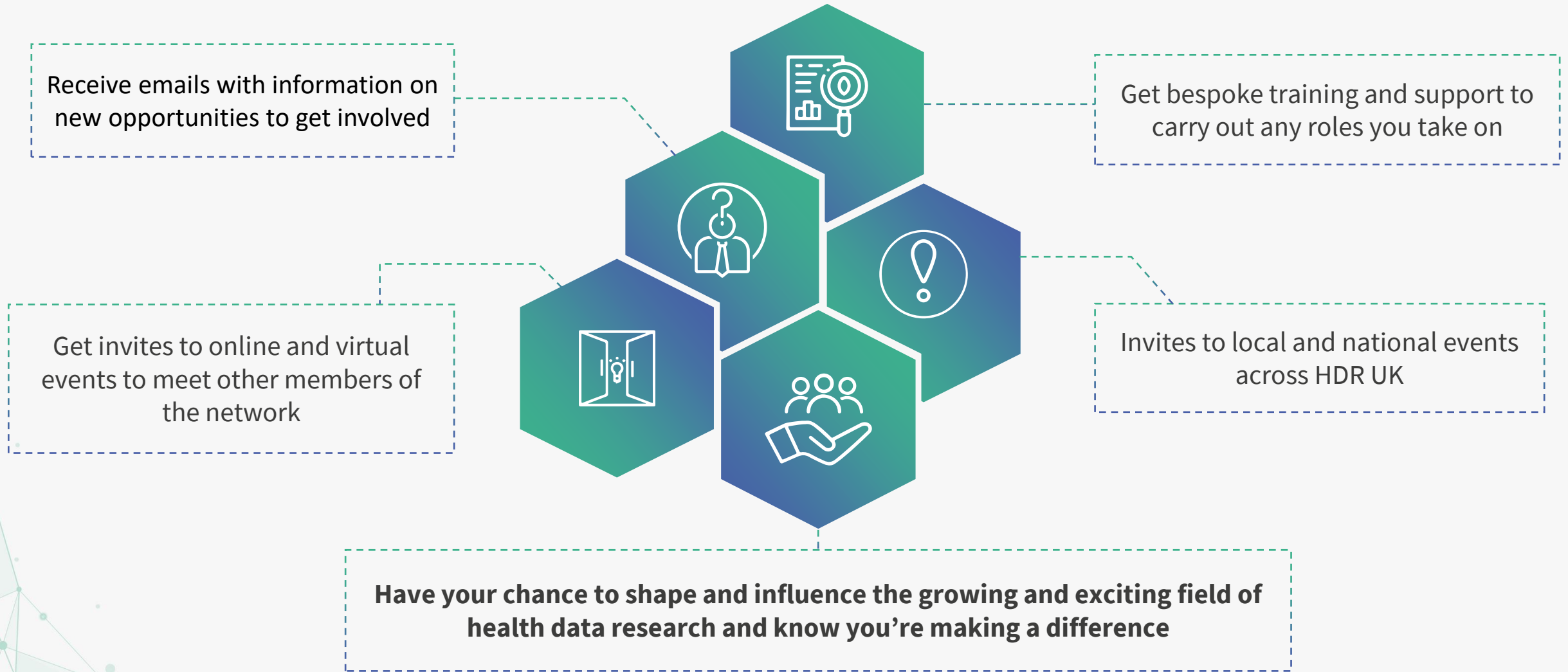
Supported real world data analysis to identify impact on hospital eye services.

HDR UK can support both researchers and funders develop robust plans for a Hub



Patient and public involvement and engagement

Key to Hubs and all HDR UK work



Sign up today - <https://www.hdr.uk/about-us/patient-and-public-involvement-and-engagement/join-hdr-uk-voices/>

Opportunities for your charity to get involved

- Reach out to current Hubs, or via HDR UK, to explore the data they hold. Several have highly-granular real world data that can describe care, services and treatments in your disease area.
- Explore creating a new Research Data Hub with us in your disease areas. Charities can make multiple roles as funders, delivery partners, and users of the Hub.
- Work with HDR UK to design, deliver, evaluate or promote your public and patient involvement data-science work

...uniting, improving and using data to enable discoveries that improve people's lives





Advancing the UK's
health data science skills

Training@HDR UK

Sarah Cadman – Director of Talent and Training



Academic Programmes

HDR UK-Turing Wellcome PhD Programme in Health Data Science

Our PhD programme aims to develop future leaders in health data science. Its underlying philosophy is that health data science requires a combination of expertise spanning three fundamental areas: statistical, computational and health sciences.



Masters Programmes

Our 6 Masters programmes, delivered in partnership with 5 leading universities across the UK, are designed to provide the best possible foundation for a career in health data science.



Other Programmes

Apprenticeships – AI Apprenticeship Academy for Health (in partnership with Cambridge Spark)

Our Cambridge Spark apprenticeships offer expert-led, MSc equivalent 15-month apprenticeships that will bring major benefits to employers and employees alike. It is part of our drive to ensure that anyone with the ambition, talent and drive can have a career in health data science – no matter what your background or where in the UK you live.



Health Data Science Academic School

HDR UK runs an annual academic school targeted at PhD students, early-mid career researchers, and technology specialists working in health data science across academia, the NHS and industry, equip them with the necessary skills to respond to the very latest challenges in health data science.

Black Internship Programme

Health Data Science Black Internship Programme



“I am eternally grateful for being selected to be part of this programme as it has opened up a world of opportunities for me. I am mighty proud to be part of the first cohort of Health Data Research UK Black health data science interns!”

Dr Shukrat O. Salisu-Olatunji, Intern at National Institute for Health Research (NIHR)



“The interns completed their projects beyond initial expectations of the team.”

2021 Host Organisation

“Don’t hesitate to get involved in this incredible programme.”

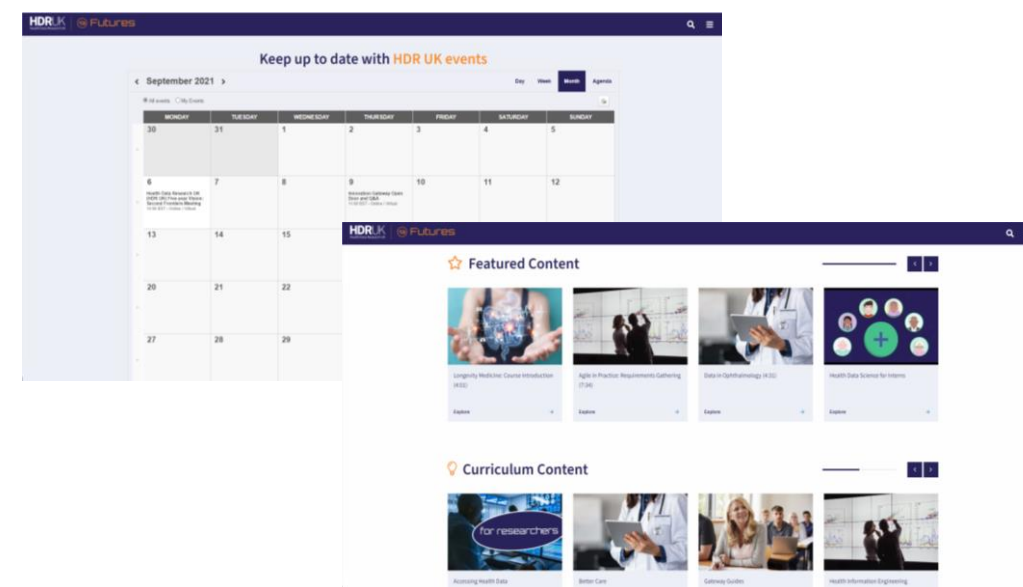
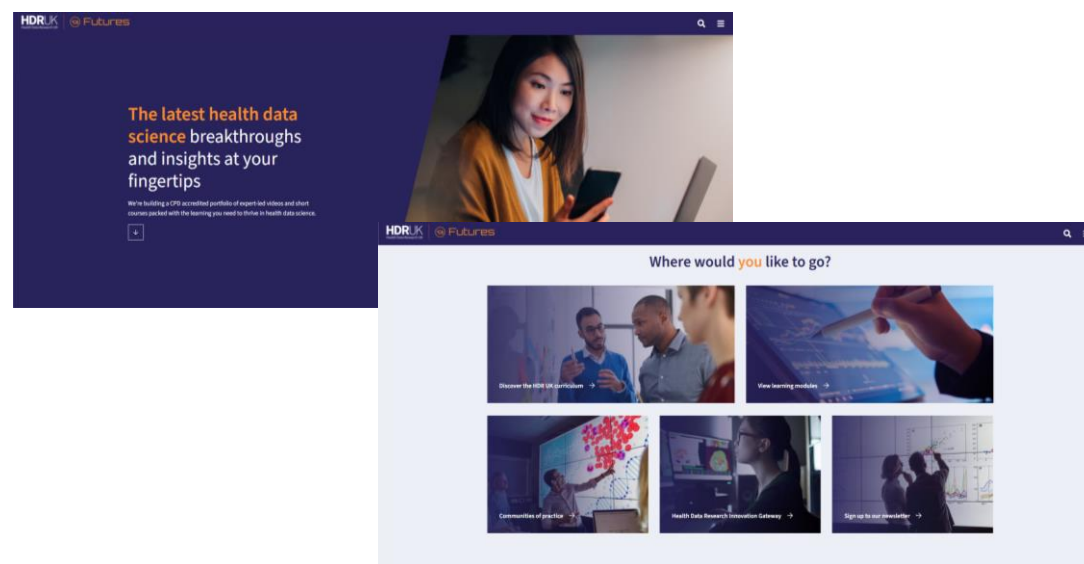
2021 Host Organisation

If you would like to find out how your organisation can take part and the benefits it can bring, please join our CEO, Caroline Cake, for a Q&A webinar on **16th November**.

Sign up here <https://www.hdruk.ac.uk/events/black-internship-programme-qa-session-for-host-organisations/>

HDR UK Futures

HDR UK Futures, our brand-new and completely **free** Virtual Learning Environment, hosts our growing catalogue of curated online learning content and now has 1,400+ registered users.



How we could collaborate on training

01

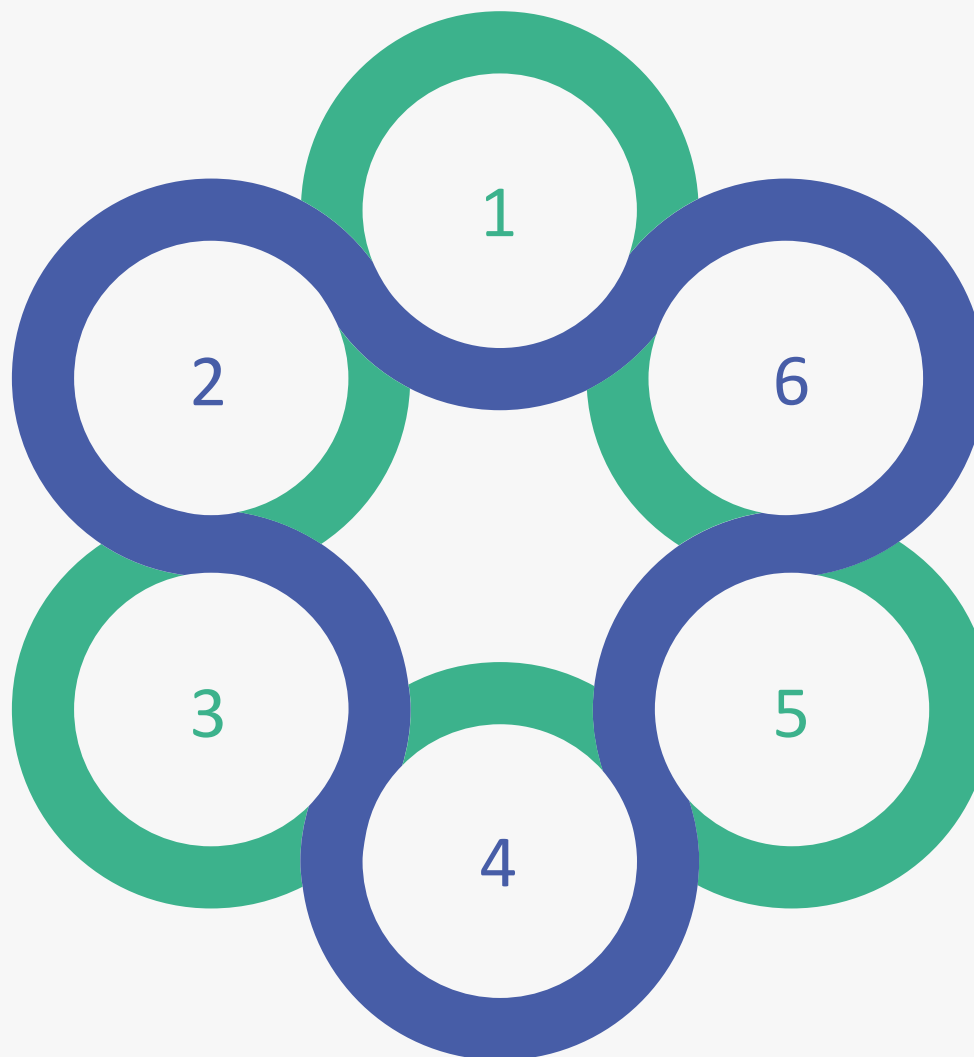
Can you host interns as part of our Black Internship Programme?

02

Can you help us shape a learning path for your sector? Do you have a suggested topic for a bite-size video that meets a need?

03

Can you deliver a relevant bite-sized video or do you know somebody that can?



04

We can promote your training events or career opportunities on social media, the website and our learning platform

05

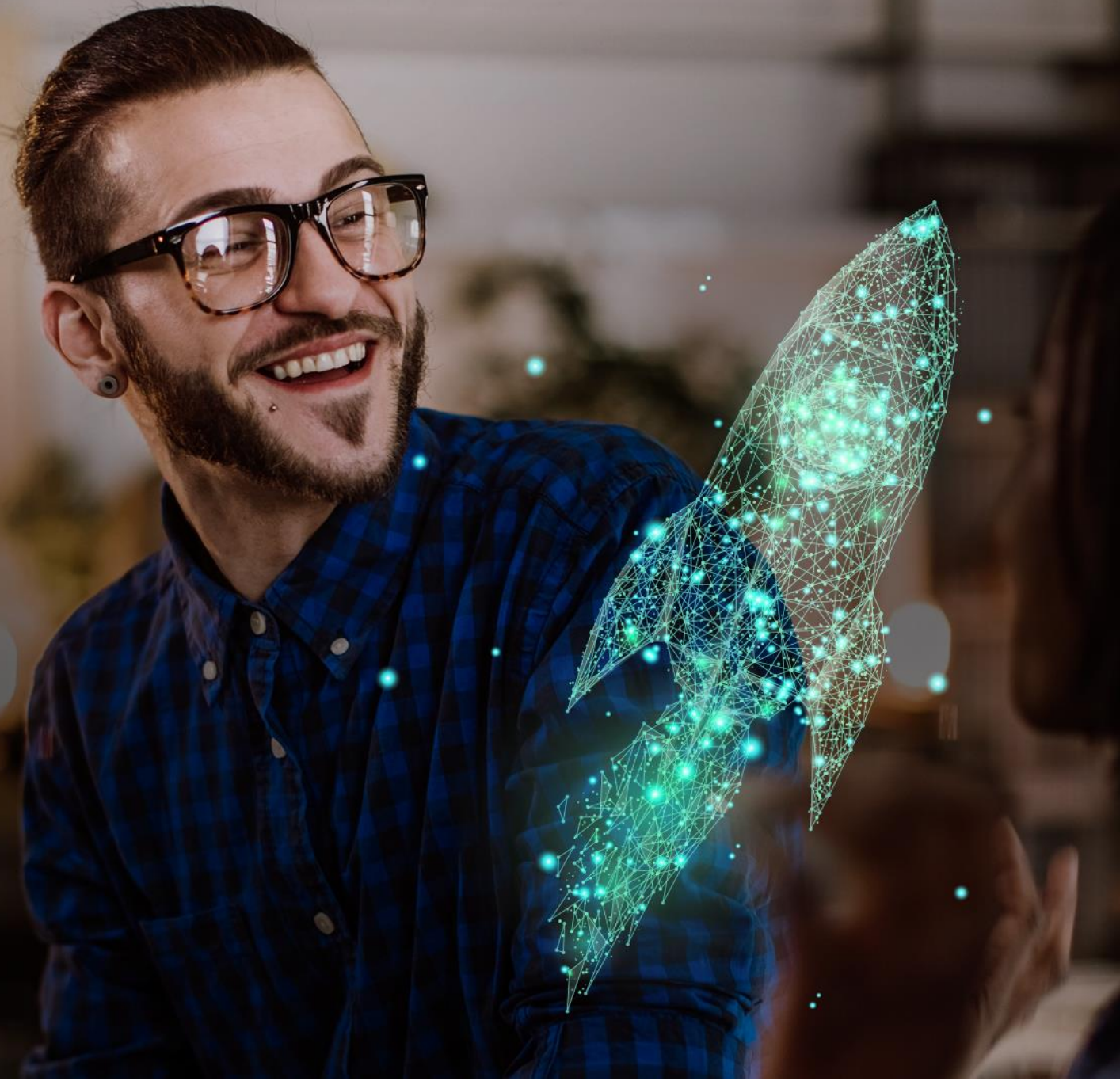
Is there a training event that you would like us to deliver?

06

Sign up to HDR UK Futures and access our training courses and join our community
(<https://hdruklearning.csod.com>)

HDRUK
Health Data Research UK

Thank you



Break outs – 3:30 – 3:55

10/11/2021



Breakout sessions – your chance to make contacts and follow ups

Room 1 - Developing Data Hubs – James Pickett

Room 2 - Making data open – Paola Quattroni

Room 3 - Skills and capacity – Sarah Cadman

Room 4 - Data landscape – David Seymour

Room 5 - Data at scale DATA-CAN – Monica Jones

You need to go to the bottom of your zoom screen and click the breakout room button, which will allow you to choose your breakout room from the list. Using the same button, you can choose to move to another breakout room at any time.

Wrap up – continuing the conversation

David Seymour

10/11/2021



Opportunities for your charity to get involved

1. Support wider discovery and access to datasets you fund and are relevant to your disease area
2. Explore what a Health Data Research Hubs could do for your field
3. Promote data science capacity building and training for your community
4. Join the UK Health Research Alliance to shape health data ecosystem
5. Share your public and patient involvement and engagement experience
6. Something else? Get in touch!

<https://www.hdruk.ac.uk/about-us/partner-organisations/>

Please complete our short evaluation





COVID-19

Our response and key insights



Our three key priorities at the onset of the COVID-19 pandemic

1

Co-ordinate and connect national data science driven research efforts related to COVID-19

2

Accelerate access to UK-wide priority data relevant to COVID-19 for research

3

Leverage the best of the UK's health data science capability to address the wider impact of the COVID-19 pandemic, supporting vulnerable groups that will be hardest hit

Support the UK government response through regular reporting to SAGE



Health Data Research UK @HDR_UK · 16 Mar

As the national institute for health data science, our HDR UK community is actively championing the use of health data to address the #COVID-19 challenge including work on risk factors, clinical trials, care pathways and surveillance.

Find out more:



Statement on Coronavirus Pandemic - HDR UK

hdruk.ac.uk



17

16



Impact Case Study 1:

Data enabled recruitment to PRINCIPLE



- **Developed and enabled near real-time, data-driven, ethical approach for enhancing recruitment into the PRINCIPLE trial** - by contacting people with a recent COVID-19 positive test result from the central NHS Test and Trace service within 24-48 hours of their test result.
 - **Rapid Public Patient Involvement & Engagement survey** (>90 respondents) to gain insights on public perceptions - demonstrated an efficient process to rapidly inform the trial team's understanding and recruitment approach
 - **Multi-disciplinary team** formed to solve the complex issues required to provide a near-real time feed of potential trial participants from test result data to the research team.
- **IMPACT: Rapidly increased weekly recruitment rate** allowing more rapid evaluation of treatments and increased safety for participants. PRINCIPLE has recruited 7,257 participants as at 9-Nov-21 (from <1000 pre-data enablement)
 - **Now employing approach across other National Core Studies and Urgent Public Health trials** – Roll out of this approach to support AZ trials. AZ have reported **global interest in approach**.

Impact Case Study 2: Vaccine Effectiveness

Challenge

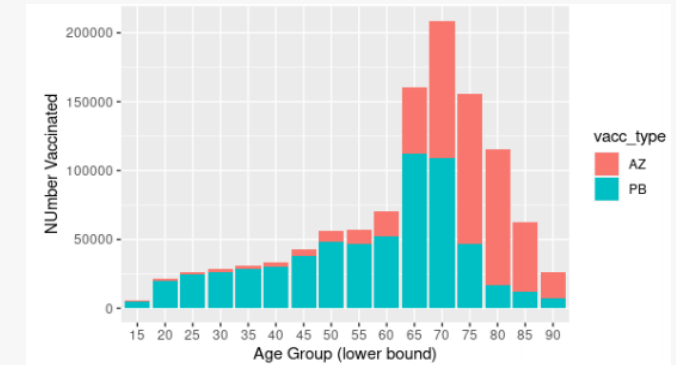
- To **confirm the real-world effectiveness of COVID-19 vaccines** to establish the success of the roll out is urgent

Solution

- Enabling access to the EAVE II dataset, which links vaccination, primary care, COVID-19 testing, hospitalisation and mortality records for 99% Scottish population (5.4M people), through the Scottish National Safe Haven
- This setting provided access for approved researchers in a **safe and secure way** and allowed **rapid analysis to data**, with publication of findings within weeks of data collection

Impact

- Analysis showed that the Pfizer and AstraZeneca vaccines reduced hospital admissions by 85% and 94% respectively (and this result was maintained for adults >80 years)
- The results provided early insights that the **COVID-19 vaccination is working on a population-wide level and provides confidence in the continuing roll out**



Effectiveness of First Dose of COVID-19 Vaccines Against Hospital Admissions in Scotland: National Prospective Cohort Study of 5.4 Million People

21 Pages • Posted: 19 Feb 2021

“This study is the first to describe the country-wide effect of the approved COVID-19 vaccines on preventing severe illness and hospital admissions... the brilliant news is that this suggests the vaccine delivery programme is working.”

Dr Josie Murray,
Public Health Scotland